

**GENERAL NOTES**

1. UNLESS OTHERWISE SPECIFIED ALL DIMENSIONS ARE IN MILLIMETERS.
2. DIMENSIONS SHALL BE ADJUSTED AS PER SITE CONDITIONS.
3. THE BOLTS & LUBRICATED NUTS ASSEMBLY TO BE TESTED ACCORDING TO ASTM A453 BY MANUFACTURER PRIOR TO SHIPMENT TO ASSURE TENSIONING.
4. PRE-TENSION FOR BOLTS SHOULD BE 200 KN.
5. BOLT SHALL BE HOT DIP GALVANIZED. NUT & WASHER TO BE HEAVILY GALVANIZED.
6. ALL GROOVE WELD SHALL BE FULL PENETRATION UNLESS NOTED OTHERWISE.
7. THIS ASSEMBLY SHALL BE PAINTED AS PER THE SPLASH ZONE PAINTING SPECIFICATION (DOC # S103-S1-SPE-1-0001-03-00-00).

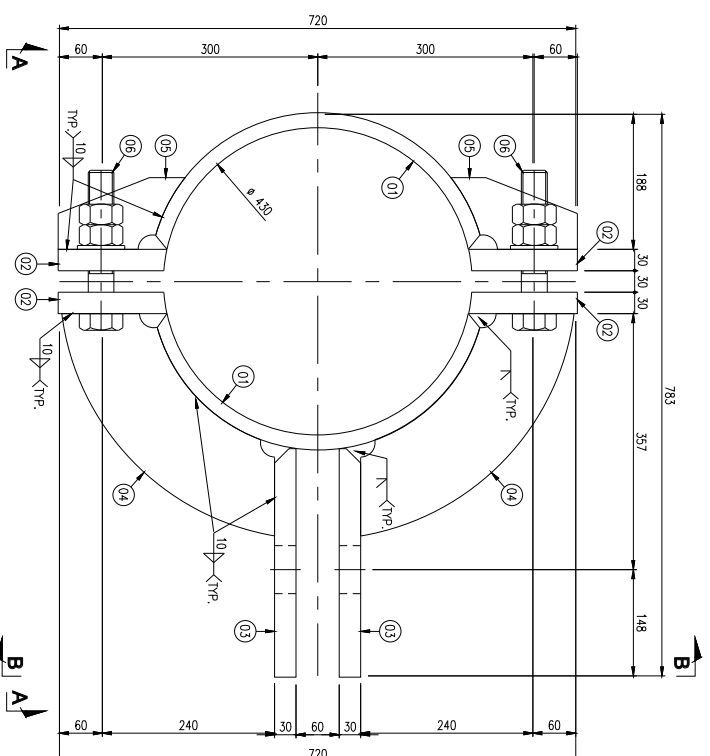
**BILL OF MATERIALS**

Item No.	Description (UNITS)	Material	Qty	Unit	Weight, kg
				UNIT	TOTAL
01	PLATE, 20 THK	S355 J2	2	EA	64
02	PLATE, 30 THK	S355 J2	4	EA	23
03	PLATE, 30 THK	S355 J2	2	EA	40
04	PLATE, 20 THK	S355 J2	6	EA	7
05	PLATE, 20 THK	S355 J2	6	EA	2
06	M16 BOLT x 200L W/ NUT & WASHER (SEE NOTES 3-5)	ASTM A449 TYPE-1/ASTM A194 G-2H/ASTM F436	8	EA	2
07	M16 STUDS x 250L W/ NUTS, LOCK NUTS & WASHERS	ASTM A449 TYPE-1/ASTM A194 G-2H/ASTM F436	1	EA	27
<b>TOTAL:</b>					<b>397</b>

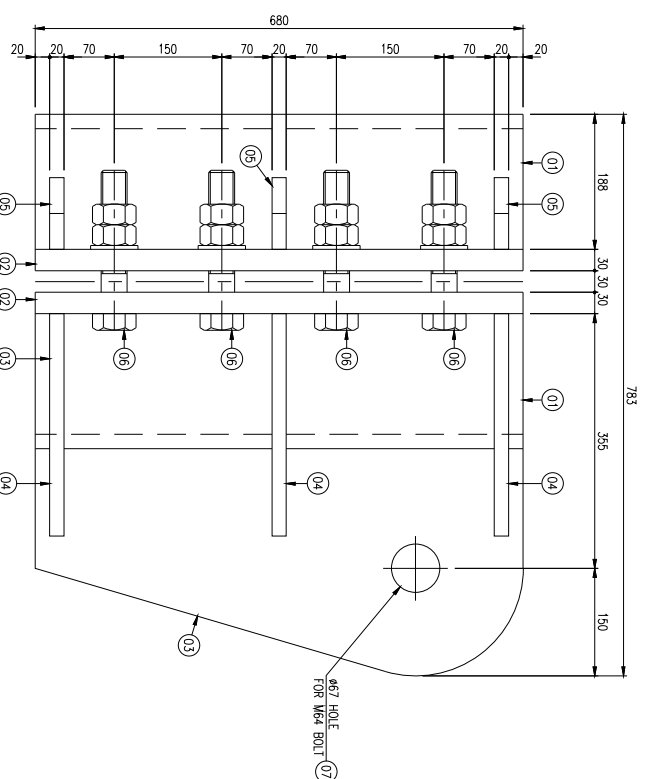
NOTE: BILL OF MATERIALS SHOWN FOR 1 ASSEMBLY. MAKE 4 NOS. CLAMP ASSEMBLIES.

**REFERENCE DRAWING**

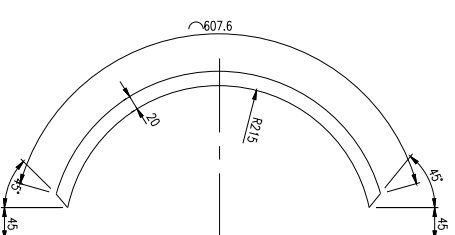
Z04-S1-DET-01-0002-001-00 STRUCTURAL SUPPORT DETAILS FOR CONDUCTOR OF 110KV



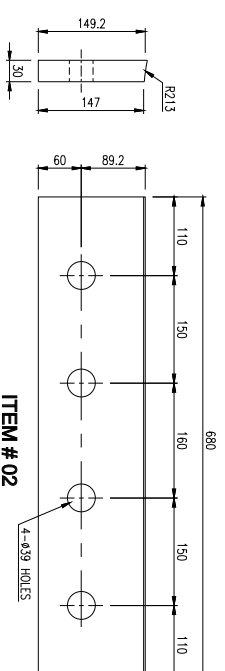
**PLAN VIEW**  
SCALE 1:5



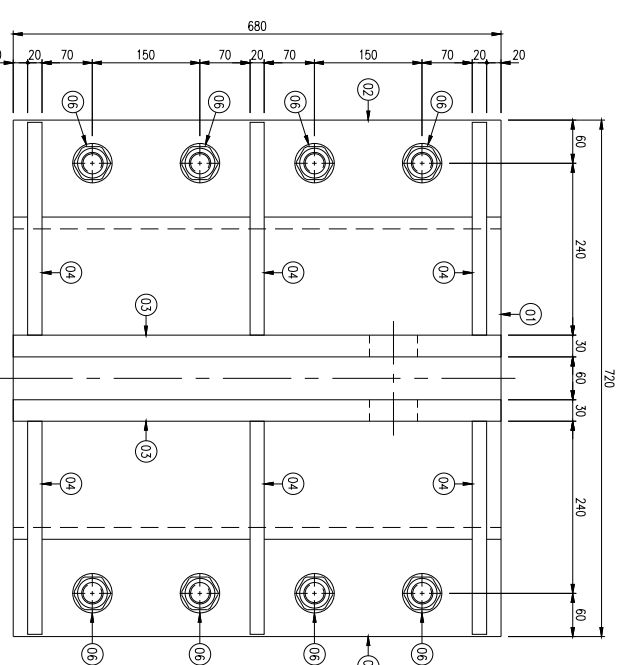
**VIEW A-A**  
SCALE 1:5



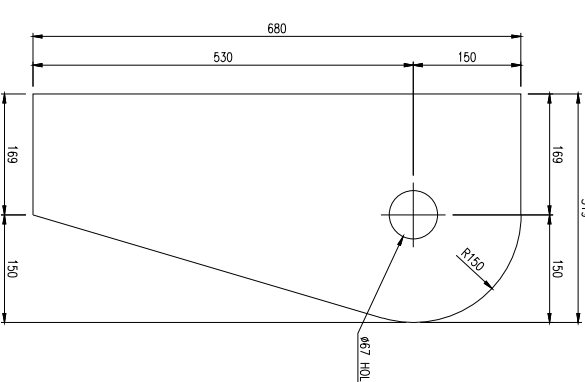
**ITEM # 01**



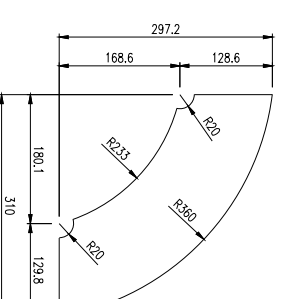
**ITEM # 02**



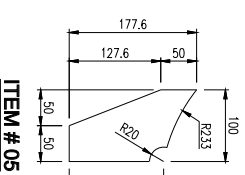
**VIEW B-B**  
SCALE 1:5



**ITEM # 03**



**ITEM # 04**



**ITEM # 05**