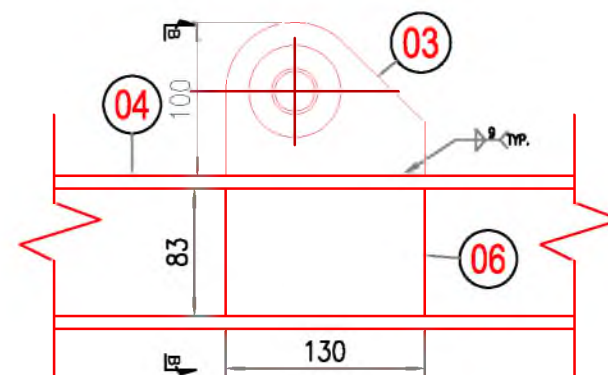
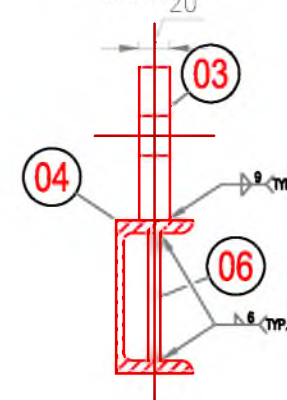


VIEW A-A
SCALE 1:20
(TYPICAL)



DETAIL-1 (TYP.)
SCALE 1:5
(TYPICAL)



VIEW B-B (TYP.)
SCALE 1:5
(TYPICAL)

GENERAL NOTES

1. UNLESS OTHERWISE SPECIFIED ALL DIMENSIONS ARE IN MILLIMETERS & ELEVATIONS IN METERS.
2. FIELD CONSTRUCTION TEAM SHALL VERIFY ALL THE DIMENSIONS PRIOR TO CONSTRUCTION/FABRICATION OF STRUCTURAL MEMBERS.
3. UNLESS NOTED OTHERWISE ALL GROOVE WELD SHALL BE FULL PENETRATION.
4. THE POSITION OF THE LIFTING LUGS IS BASED ON THE 10M PIPES ATTACHED TO THE LIFTING FRAME. IF THE PIPES ARE NOT ATTACHED, THIS POSITIONS WILL CHANGE DUE TO THE CONSEQUENT CHANGE OF THE CENTRE OF GRAVITY LOCATION.

LEGEND:

BILL OF MATERIALS

ITEM NO.	DESCRIPTION	QTY	UNIT	WEIGHT (KG)	
				UNIT WT.	TOTAL
01	WIRE ROPE 0.5 inch	13.4	M	11.5	11.5
02	TURNBUCKLE	4	EA		
03	LIFTING LUG 130x20THK	12	EA	1.62	19.44
04	CHANNEL 100x50x10	18.3	M	10	183
05	U-BOLT Ø12mm	12	EA	10.5	126
06	STIFFENER 83x130x8mm THK	12	EA	0.7	8.4
07	BOLT 8MM + nut	10	EA		
08	EQ.ANGLE 100X100X10, 200LONG	20	EA	2.9	58
				TOTAL:	406.34

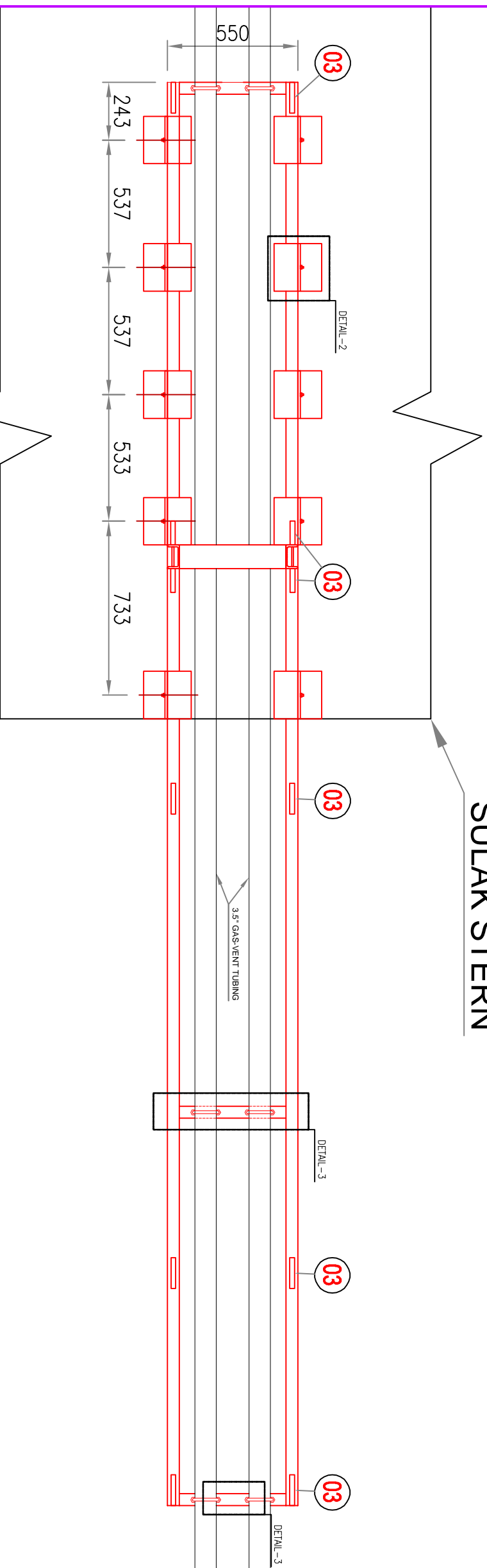
REFERENCE DRAWING

GENERAL NOTES

1. UNLESS OTHERWISE SPECIFIED ALL DIMENSIONS ARE IN MILLIMETERS & ELEVATIONS IN METERS.
2. FIELD CONSTRUCTION TEAM SHALL VERIFY ALL THE DIMENSIONS PRIOR TO CONSTRUCTION/FABRICATION OF STRUCTURAL MEMBERS.
3. UNLESS NOTED OTHERWISE ALL GROOVE WELD SHALL BE FULL PENETRATION.
4. THE POSITION OF THE LIFTING LUGS IS BASED ON THE 10M PIPES ATTACHED TO THE LIFTING FRAME. IF THE PIPES ARE NOT ATTACHED THIS POSITIONS WILL CHANGE DUE TO THE CONSEQUENT CHANGE OF THE CENTRE OF GRAVITY LOCATION.

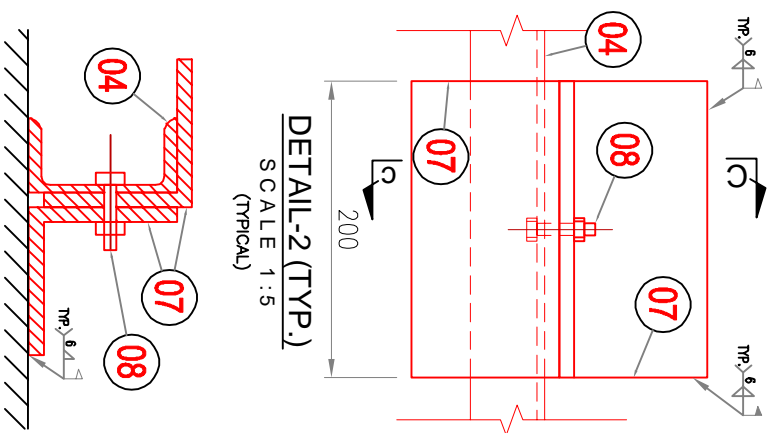
LEGEND:

SULAK STERN

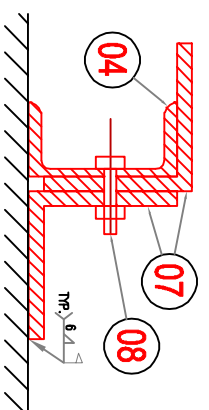


GENERAL ARRANGEMENT

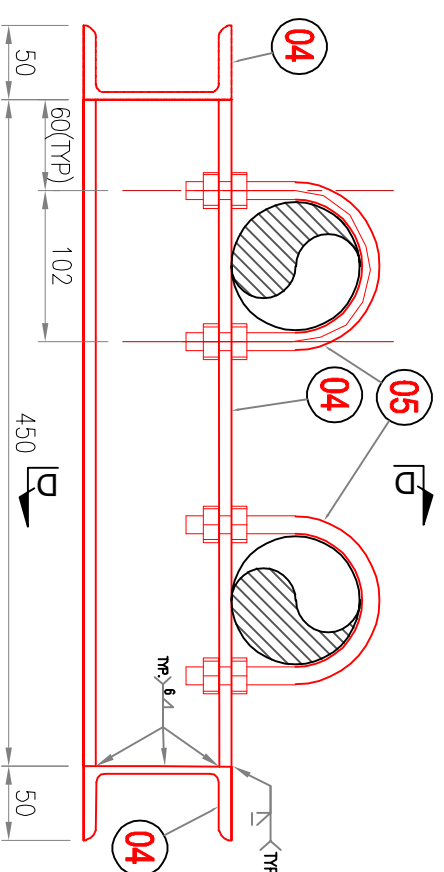
SCALE 1:20



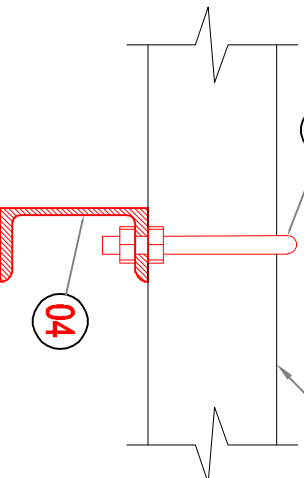
DETAIL-2 (TYP.)
SCALE 1:5
(TYPICAL)



VIEW C-C (TYP.)
SCALE 1:5
(TYPICAL)



DETAIL-3 (TYP.)
SCALE 1:5
(TYPICAL)



VIEW D-D (TYP.)
SCALE 1:5
(TYPICAL)

BILL OF MATERIALS

ITEM NO.	DESCRIPTION	QTY	UNIT	WEIGHT (KG)	
				UNIT WT.	TOTAL
01	WIRE ROPE 0.5 inch	13.4	M	11.5	11.5
02	TURNBUCKLE	4	EA		
03	LIFTING LUG 130x20THK	12	EA	1.62	19.44
04	CHANNEL 100x50x10	18.3	M	10	183
05	U-BOLT Ø12mm	12	EA	10.5	126
06	STIFFENER 83x130x8mm THK	12	EA	0.7	8.4
05	BOLT 8MM + nut	10	EA		
06	EQ. ANGLE 100X100X10, 200LONG	20	EA	2.9	58
TOTAL:					406.34

REFERENCE DRAWING
