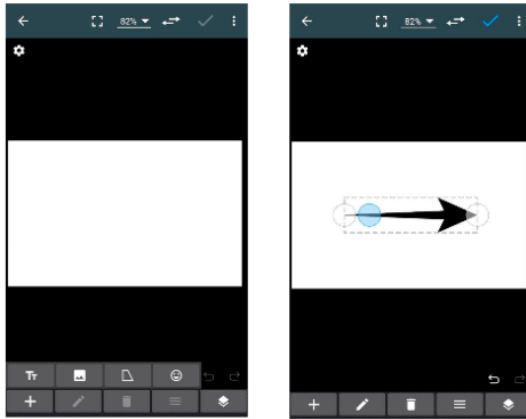
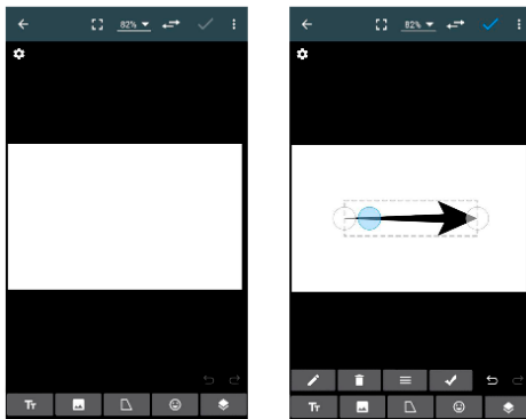


Solution to the 1st Problem:

## Before



## After



### The Solution

So the solution is to crop the way and make it more easily to find and use. The “+” button was deleted and all “add” functions came to the first panel. The panel of editing was collapsed. It’s appears only at the time the user actually edit. That makes UI more friendly and shows all the functionality of adding pictures and shapes just in time user comes to page.

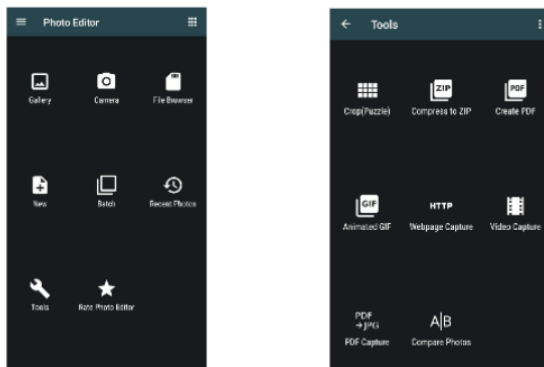
### Design Rationale

After making changes to the design, UI applies the user to see all functions of adding right where they have to be. Right at the menu of adding. The icons let the user know what kind of action will happen after he put the button. The accessibility of the functions was increased.

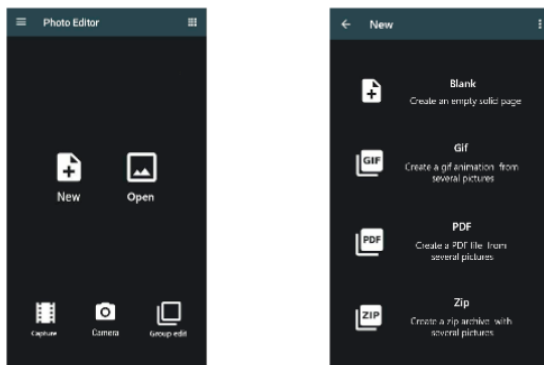
Also changing name of the “text/image” button to “Insert” or “add” will increase users the understand of the interface.

The solution of the 2<sup>nd</sup> problem

## Before



## After



## The solution

Re-group the main features of the app and give the user explanations what that or other feature do. Delete the “tools” menu cause it is really unusable. Users rarely put that buttons in the tests. The “rate us” button is presented in the hamburger menu and does not fits the primary goals of users, so it was deleted too.

## Design Rationale

With new design the functions were grouped on logical groups, and the most useful functions scales more than the regular one. It helps the users to behave more intuitively without thinking where the function could be. Also the descriptions helps to find functions more quickly, and tells the user about the full functionality of app.

The functions was divided by the next way:

New (everything that creates something )

Blank

Gif

PDF

Zip

Open (to edit something)

Gallery

File browser

Recent

Capture (that captures something)

Web page capture

PDF capture

Video capture

Group edit

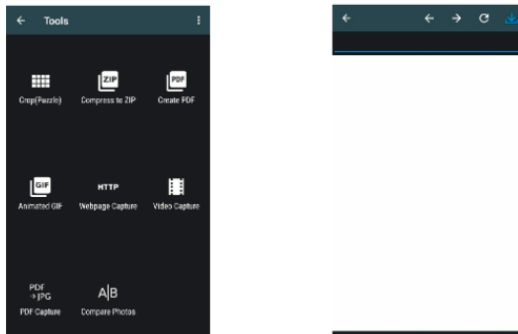
Puzzle

Banch

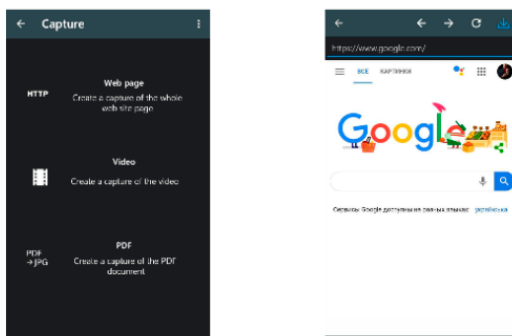
Compare photos

The solution of the 3<sup>rd</sup> problem:

Before



After



The solution

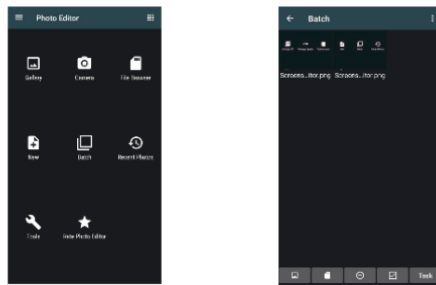
Add the default value of the address line to google.com to make the user understand that the app has the built-in browser and where the line is located.

Design Rationale

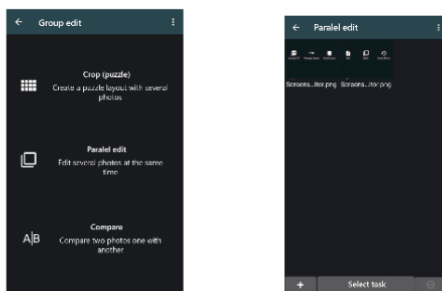
Now, with the grouped main menu the exploring of function “web page capture” became much more easily. And With the default value of the main page in built-in browser makes it more visible and understandable.

The solution to the 4<sup>th</sup> problem

## Before



## After



The solution

Rename batch function to something more narrative and simple. Make its purpose clear. Make the interface in the function more clearly by deleting some unnecessary button-functionality.

### Design Rationale

New layout in the main menu helps to find the function quick and clear. The new name of the function shows the potential of it, explaining what is going to happen. The interface was cropped to the necessary functionality that decreases the chance of misunderstanding and frustrations. Now the clearly buttons shows the main activities.

+ - add the new photo

Select task – selecting function that is want to be done with the photos

- - delete the selected pictures

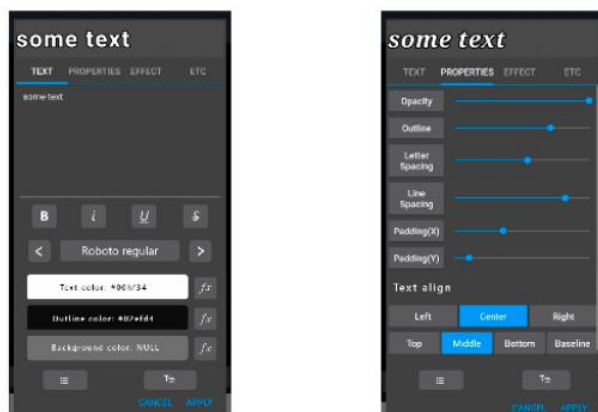
Selecting pictures staying that was that was. By tapping on it.

The solution of the 5<sup>th</sup> problem

## Before



## After



The solution

Regroup the functions. Making the most frequently use functions on the first page. Reduce the complexity of interface.

Design Rationale

Now when the user edit or adds text he will see everything the regular text editors apply. Making text bold, italic, with underline or with straight line. Changing the font can be by some ways

- Clicking on the name of font and choosing from whole fonts
- Clicking on the arrow till find font that fits perfect

Colors now reduced with the complexity. Now user doesn't need to change color of the bottom and of the top of text separately. If he wants to do gradient he can click on "fx" button to open old menu with a lot of settings of color.

Was deleted the update preset function cause it doesn't had sense. Users always resave the preset if they want to update it.