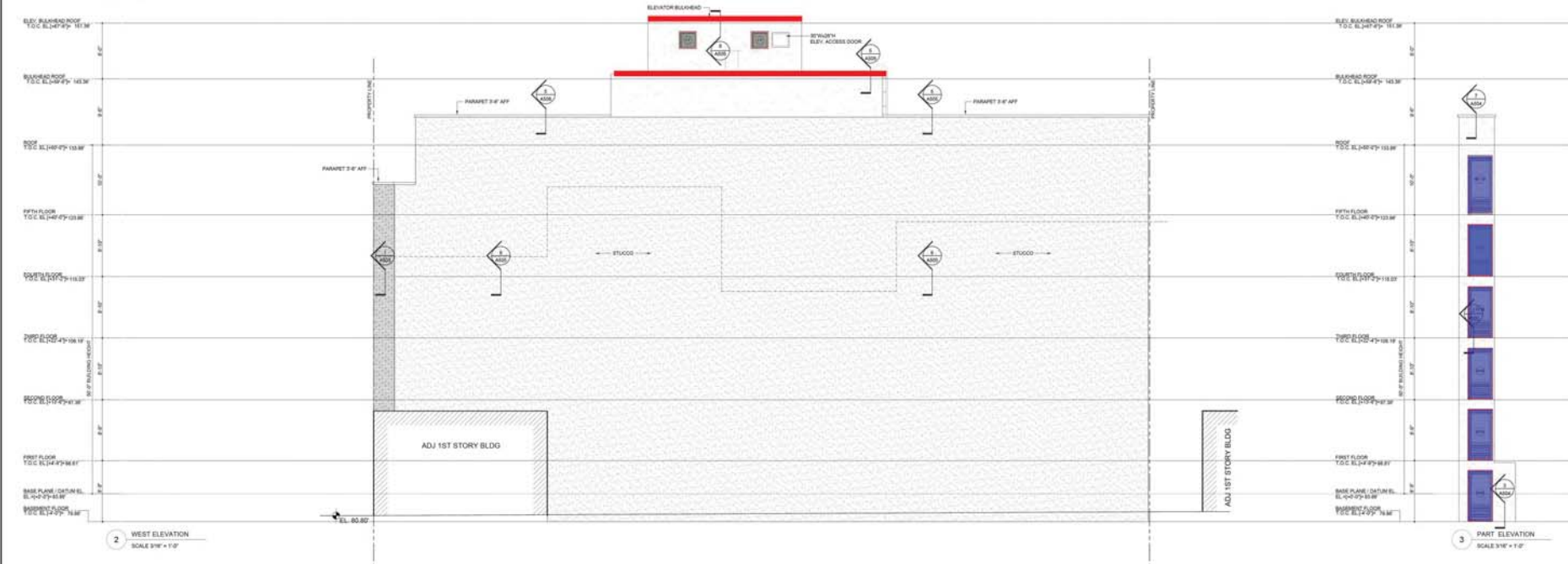


1 EAST ELEVATION
SCALE 3/8" = 1'-0"



2 WEST ELEVATION
SCALE 3/8" = 1'-0"

3 PART ELEVATION
SCALE 3/8" = 1'-0"

HAPPY LIVING DEVELOPMENT 1000 10TH AVENUE SUITE 1000 DENVER, CO 80202	ARCHITECT HSAC & STERN ARCHITECTS, P.C. 1000 10TH AVENUE, SUITE 1000 DENVER, CO 80202	ARCHITECTS CONSULTANT SEVERUD ASSOCIATES, PC 1000 10TH AVENUE, SUITE 1000 DENVER, CO 80202	ARCHITECTS CONSULTANT A & D ENGINEERING, PLLC 1000 10TH AVENUE, SUITE 1000 DENVER, CO 80202	PROJECT TITLE 834 PACIFIC STREET DENVER, CO 80202	DRAWING TITLE BUILDING ELEVATIONS SCALE: AS SHOWN	SHEET INFORMATION SHEET NO. 001 DATE: 08.10.2018 DRAWN BY: [Signature] CHECKED BY: [Signature]	SEAL 	DRAWING NO. A201-00
--	--	---	--	---	---	--	----------	-------------------------------

834 Pacific St.										Door system (tan door)		Swing/Slide doors		Window system		Operables		build inside window		Louver (titanium coping/tag AlCo)		Metal coping (tag MC)				
Product	Elevation	Description	Q-ty	W/dth'	Height'	Sq.Ft Per Unit	L.Ft Per Unit	Total Sq.Ft	Total L.Ft	Q-ty	Total Sq.Ft	Q-ty	Total Sq.Ft	Q-ty	Total Sq.Ft	Q-ty	Total Sq.Ft	Q-ty	Total Sq.Ft	Q-ty	Total L.Ft	Q-ty	Total Sq.Ft			
AKoP	North	Aluminum coping	1	198	1	0	17	0	17	0	0	0	0	0	0	0	0	0	0	0	1	17	0	0		
AKoP	North	Aluminum coping	1	104	1	0	9	0	9	0	0	0	0	0	0	0	0	0	0	0	1	9	0	0		
AKoP	North	Aluminum coping	2	180	1	0	15	0	30	0	0	0	0	0	0	0	0	0	0	0	2	30	0	0		
LVR	North	Self-standing louvers	2	30	30	6	0	13	0	0	0	0	0	0	0	0	0	0	0	2	13	0	0			
DCR8K2	North	Door system	2	41	90	19	0	38	0	2	38	1	2	22	44	0	0	0	0	0	0	0	0	0		
MC	North	Metal coping	2	86	10	6	0	12	0	0	0	0	0	0	0	0	0	0	0	0	0	0	2	12		
MC	North	Metal coping	2	86	10	0	0	0	0	0	0	0	0	0	0	0	0	0	0	0	0	0	2	0		
MC	North	Metal coping	1	88	10	5	0	5	0	0	0	0	0	0	0	0	0	0	0	0	0	0	1	5		
MC	North	Metal coping	1	54	10	4	0	4	0	0	0	0	0	0	0	0	0	0	0	0	0	0	1	4		
MC	North	Metal coping	1	68	10	5	0	5	0	0	0	0	0	0	0	0	0	0	0	0	0	0	1	5		
MC	North	Metal coping	1	86	10	6	0	6	0	0	0	0	0	0	0	0	0	0	0	0	0	0	1	6		
MC	North	Metal coping	1	86	10	6	0	6	0	0	0	0	0	0	0	0	0	0	0	0	0	0	1	6		
MC	North	Metal coping	1	68	10	5	0	5	0	0	0	0	0	0	0	0	0	0	0	0	0	0	1	5		
MC	North	Metal coping	1	68	10	5	0	5	0	0	0	0	0	0	0	0	0	0	0	0	0	0	1	5		
MC	North	Metal coping	1	84	10	4	0	4	0	0	0	0	0	0	0	0	0	0	0	0	0	0	1	4		
MC	North	Metal coping	1	84	10	4	0	4	0	0	0	0	0	0	0	0	0	0	0	0	0	0	1	4		
MC	North	Metal coping	1	86	10	6	0	6	0	0	0	0	0	0	0	0	0	0	0	0	0	0	1	6		
MC	North	Metal coping	1	86	10	6	0	6	0	0	0	0	0	0	0	0	0	0	0	0	0	0	1	6		
MC	North	Metal coping	1	68	10	5	0	5	0	0	0	0	0	0	0	0	0	0	0	0	0	0	1	5		
w10	North	Windows system	2	68	51	24	0	48	0	0	0	2	48	2	4	10	40	0	0	0	0	0	0	0		
w11	North	Windows system	1	54	51	19	0	19	0	0	0	0	0	1	19	1	16	16	0	0	0	0	0	0		
w1A	North	Windows system	13	86	87	52	0	779	0	0	0	0	0	13	779	2	30	11	318	1	15	10	146	0		
w1B	North	Windows system	13	86	87	52	0	779	0	0	0	0	0	13	779	2	30	11	318	1	15	10	146	0		
w2	North	Windows system	24	60	87	36	0	870	0	0	0	0	0	24	870	2	48	11	518	1	24	9	216	0		
w2.1.1	North	Windows system	5	68	86	41	0	205	0	0	0	0	0	5	205	2	10	12	120	1	5	10	30	0		
w3	North	Windows system	14	54	87	33	0	457	0	0	0	0	0	14	457	1	14	19	268	1	14	8	106	0		
w4A	North	Windows system	3	86	87	50	0	149	0	0	0	0	0	3	149	2	6	13	88	0	0	0	0	0		
w4B	North	Windows system	3	86	87	50	0	149	0	0	0	0	0	3	149	2	6	13	88	0	0	0	0	0		
w5	North	Windows system	7	68	59	28	0	84	0	0	0	0	0	7	84	2	6	12	71	0	0	0	0	0		
w6	North	Windows system	1	68	59	28	0	28	0	0	0	0	0	1	28	1	1	18	18	0	0	0	0	0		
w8R1	North	Windows system	1	57	92	36	0	36	0	0	0	0	0	1	36	0	0	0	0	0	0	0	0	0		
w51	North	Windows system	1	426	98	290	0	290	0	0	0	0	0	1	290	4	4	17	69	0	0	0	0	0		
w510	North	Windows system	2	409	98	278	0	557	0	0	0	0	0	2	557	6	6	17	104	0	0	0	0	0		
w53	North	Windows system	1	121	98	82	0	82	0	0	0	0	0	1	82	2	4	17	89	0	0	0	0	0		
w53A	North	Windows system	1	199	98	135	0	135	0	0	0	0	0	1	135	2	2	17	35	0	0	0	0	0		
w53B	North	Windows system	1	199	98	135	0	135	0	0	0	0	0	1	135	2	2	17	35	0	0	0	0	0		
w57.1A	North	Windows system	1	62	98	42	0	42	0	0	0	0	0	1	42	2	2	17	35	0	0	0	0	0		
w57.1B	North	Windows system	1	62	98	42	0	42	0	0	0	0	0	1	42	2	2	17	35	0	0	0	0	0		
w57.2	North	Windows system	1	31	98	21	0	21	0	0	0	0	0	1	21	0	0	0	0	0	0	0	0	0		
w57.2	North	Windows system	1	31	98	21	0	21	0	0	0	0	0	1	21	0	0	0	0	0	0	0	0	0		
w57.2	North	Windows system	1	31	98	21	0	21	0	0	0	0	0	1	21	0	0	0	0	0	0	0	0	0		
w57.2A	North	Windows system	1	93	98	63	0	63	0	0	0	0	0	1	63	1	1	17	17	0	0	0	0	0		
w57.2B	North	Windows system	1	93	98	63	0	63	0	0	0	0	0	1	63	1	1	17	17	0	0	0	0	0		
w57.4	North	Windows system	1	124	98	84	0	84	0	0	0	0	0	1	84	0	0	0	0	0	0	0	0	0		
w57.4	North	Windows system	1	124	98	84	0	84	0	0	0	0	0	1	84	0	0	0	0	0	0	0	0	0		
w57.4A	North	Windows system	1	93	98	63	0	63	0	0	0	0	0	1	63	1	1	24	24	0	0	0	0	0		
w57.4B	North	Windows system	1	93	98	63	0	63	0	0	0	0	0	1	63	1	1	22	22	0	0	0	0	0		
w58	North	Windows system	1	123	98	84	0	84	0	0	0	0	0	1	84	1	1	11	11	0	0	0	0	0		
DCR1	North	Door system	1	162	178	200	0	200	0	1	200	2	2	21	42	0	0	0	0	0	0	0	0	0		
DCR2	North	Door system	1	39	180	49	0	49	0	1	49	1	1	21	21	0	0	0	0	0	0	0	0	0		
DCR3	North	Door system	1	41	152	43	0	43	0	1	43	1	1	21	21	0	0	0	0	0	0	0	0	0		
AKoP	South	Aluminum coping	1	170	1	0	14	0	14	0	0	0	0	0	0	0	0	0	0	0	1	14	0	0		
AKoP	South	Aluminum coping	1	104	1	0	9	0	9	0	0	0	0	0	0	0	0	0	0	0	1	9	0	0		
AKoP	South	Aluminum coping	2	198	1	0	17	0	33	0	0	0	0	0	0	0	0	0	0	0	2	33	0	0		
DCR4A	South	Door system	3	86	87	52	0	156	0	3	156	1	3	24	48	0	0	2	6	9	32	1	3	8	24	0
DCR4B	South	Door system	3	86	87	52	0	156	0	3	156	1	3	24	48	0	0	2	6	9	32	1	3	8	24	0
DCR4C	South	Door system	1	97	87	59	0	59	0	1	59	1	1	21	21	0	0	2	2	11	22	1	1	8	8	0
DCR5	South	Door system	1	60	87	36	0	36	0	1	36	1	1	21	21	0	0	0	0	0	0	0	0	0	0	
LVR	South	Self-standing louvers	1	30	30	6	0	6	0	0	0	0	0	0	0	0	0	0	0	0	0	0	0	0		
w1.1A	South	Windows system	3	86	99	59	0	177	0	0	0	0	0	3	177	2	6	13	77	1	3	10	29	0		
w1.1B	South	Windows system	4	86	99	59	0	237	0	0	0	0	0	4	237	2	8	13	103	1	4	10	38	0		
w1A	South	Windows system	12	86	87	52	0	624	0	0	0	0	0	12	624	2	24	11	254	1	12	10	116	0		
w1B	South	Windows system	13	86	87	52	0	676	0	0	0	0	0	13	676	2	26	11	276	1	13	10	126	0		
w2	South	Windows system	41	60	87	36	0	1486	0	0	0	0	0	41	1486	2	82	11	886	1	41	9	369	0		
w2.1	South	Windows system	7	60	99	41	0	289	0	0	0	0	0	7	289	2	14	13	184	1	7	9	63	0		
w8	South	Windows system	1	24	87	15	0	15	0	0	0	0	0	1	15	1	1	11	11	0	0	0	0	0	0	
w9	South	Windows system	4	41	87	25	0	99	0	0	0	0	0	4	99	1	4	14	56	1	4	7	28	0		
w9.1	South	Windows system	1	41	99	28	0	28	0	0	0	0	0	1	28	1	1	17	17	1	1	7	7	0	0	
w9.2	South	Windows system	1	37	85	22	0	22	0	0	0	0	0	0	0	0	0	0	0	0	0	0	0	0		
AKoP	East	Aluminum coping	1	137	1	0	11	0	11	0	0	0	0	0	0	0	0	0	0	0	0	0	1	11	0	
AKoP	East	Aluminum coping	2	259	1	0	22	0	43	0	0	0	0	0	0	0	0	0	0	0	2	43	0	0		
AKoP	East	Aluminum coping	2	265	1	0	22	0	44	0	0	0	0	0	0	0	0	0	0	0	2	44	0	0		
DCR4A	East	Door system	2	86	87	52	0	104	0																	

834 Pacific St.

Product #	Totals	Totals by area	Totals by L Ft.	Basement	Floor 1	Floor 2	Floor 3	Floor 4	Floor 5	Roof	Stair
ALCOP	1	0	17								
ALCOP	2	0	30								
LVR	2	13	0							1	
DORBK2	2	38	0								1
MC	2	12	0								
MC	2	0	0								
MC	1	5	0								
MC	1	4	0								
MC	1	6	0								
MC	1	5	0								
MC	1	4	0								
MC	1	6	0								
MC	1	5	0								
MC	1	4	0								
MC	1	6	0								
MC	1	5	0								
MC	1	4	0								
MC	1	6	0								
MC	1	5	0								
MC	1	4	0								
MC	1	6	0								
MC	1	5	0								
MC	1	4	0								
MC	1	6	0								
MC	1	5	0								
MC	1	4	0								
MC	1	6	0								
MC	1	5	0								
MC	1	4	0								
MC	1	6	0								
MC	1	5	0								
MC	1	4	0								
MC	1	6	0								
MC	1	5	0								
MC	1	4	0								
MC	1	6	0								
MC	1	5	0								
MC	1	4	0								
MC	1	6	0								
MC	1	5	0								
MC	1	4	0								
MC	1	6	0								
MC	1	5	0								
MC	1	4	0								
MC	1	6	0								
MC	1	5	0								
MC	1	4	0								
MC	1	6	0								
MC	1	5	0								
MC	1	4	0								
MC	1	6	0								
MC	1	5	0								
MC	1	4	0								
MC	1	6	0								
MC	1	5	0								
MC	1	4	0								
MC	1	6	0								
MC	1	5	0								
MC	1	4	0								
MC	1	6	0								
MC	1	5	0								
MC	1	4	0								
MC	1	6	0								
MC	1	5	0								
MC	1	4	0								
MC	1	6	0								
MC	1	5	0								
MC	1	4	0								
MC	1	6	0								
MC	1	5	0								
MC	1	4	0								
MC	1	6	0								
MC	1	5	0								
MC	1	4	0								
MC	1	6	0								
MC	1	5	0								
MC	1	4	0								
MC	1	6	0								
MC	1	5	0								
MC	1	4	0								
MC	1	6	0								
MC	1	5	0								
MC	1	4	0								
MC	1	6	0								
MC	1	5	0								
MC	1	4	0								
MC	1	6	0								
MC	1	5	0								
MC	1	4	0								
MC	1	6	0								
MC	1	5	0								
MC	1	4	0								
MC	1	6	0								
MC	1	5	0								
MC	1	4	0								
MC	1	6	0								
MC	1	5	0								
MC	1	4	0								
MC	1	6	0								
MC	1	5	0								
MC	1	4	0								
MC	1	6	0								
MC	1	5	0								
MC	1	4	0								
MC	1	6	0								
MC	1	5	0								
MC	1	4	0								
MC	1	6	0								
MC	1	5	0								
MC	1	4	0								
MC	1	6	0								
MC	1	5	0								
MC	1	4	0								
MC	1	6	0								
MC	1	5	0								
MC	1	4	0								
MC	1	6	0								
MC	1	5	0								
MC	1	4	0								
MC	1	6	0								
MC	1	5	0								
MC	1	4	0								
MC	1	6	0								
MC	1	5	0								
MC	1	4	0								
MC	1	6	0								
MC	1	5	0								
MC	1	4	0								
MC	1	6	0								
MC	1	5	0								
MC	1	4	0								
MC	1	6	0								
MC	1	5	0								
MC	1	4	0								
MC	1	6	0								
MC	1	5	0								
MC	1	4	0								
MC	1	6	0								
MC	1	5	0								
MC	1	4	0								
MC	1	6	0								
MC	1	5	0								
MC	1	4	0								
MC	1	6	0								
MC	1	5	0								
MC	1	4	0								
MC	1	6	0								
MC	1	5	0								
MC	1	4	0								
MC	1	6	0								
MC	1	5	0								
MC	1	4	0								
MC	1	6	0								
MC	1	5	0								
MC	1	4	0								
MC	1	6	0								
MC	1	5	0								
MC	1	4	0								
MC	1	6	0								
MC	1	5	0								
MC	1	4	0								
MC	1	6	0								
MC	1	5	0								
MC	1	4	0								
MC	1	6	0								
MC	1	5	0								
MC	1	4	0								
MC	1	6	0								
MC	1	5	0								
MC	1	4	0								
MC	1	6	0								
MC	1	5	0								
MC	1	4	0								
MC	1	6	0								
MC	1	5	0								
MC	1	4	0								
MC	1	6	0								
MC	1	5	0								
MC	1	4	0								
MC	1	6	0								
MC	1	5	0								
MC	1	4	0								
MC	1	6	0								
MC	1	5	0								
MC	1	4	0								
MC	1	6	0								
MC	1	5	0								
MC	1	4	0								
MC	1	6	0								
MC	1	5	0								
MC	1	4	0								
MC	1	6	0								
MC	1	5	0								
MC	1	4	0								
MC	1	6	0								
MC	1	5	0								
MC	1	4	0								
MC	1	6	0								
MC	1	5	0								
MC	1	4	0	</							